



# Global Power

Integrated Solutions for Reliability, Resiliency and Financial Certainty



**BLACK & VEATCH**

# Re-Powering the Power Industry

Like you, we know clean and sustainable energy requires flexible solutions that meet the requirements and expectations of governments, regulators and customers alike. We believe in an integrated approach across global energy markets, one where infrastructure, technology, businesses and consumers work together to improve communities, economies and the environment.

## Integrating multiple power sources across an interconnected grid

It all starts with balanced generation across diverse fuel sources that meets demands for reliable, resilient energy supplies through a secure electrical grid. Natural gas now serves as an affordable, plentiful energy source that complements the global growth in renewables and addresses intermittency issues. Today, we're helping utilities, governments and corporations integrate solar, wind, and energy storage systems to decrease costs and reduce carbon footprints.

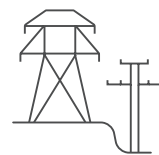
15

**first-of-a-kind  
power generation  
technologies**  
deployed globally



## Enabling large scale and distributed energy for reliability and resilience

Linking renewable energy to the grid requires thinking beyond infrastructure repair and replacement. Power transmission and distribution requires new investments in underground and overhead linkages, including immediate needs for grid hardening as extreme weather increasingly threatens existing infrastructure. A more resilient grid sets the stage for advanced modernization efforts and data analytics that will handle changing load conditions, allowing power to flow safely and efficiently across distributed energy resources (DERs), such as rooftop solar and microgrids.



**Thousands of miles  
of transmission  
projects, from**

**69-500**

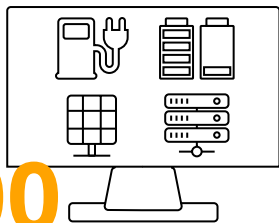
kilovolts



Over

**700**

**distributed energy  
buildouts**



### **We're your partner in meeting customer demands**

No matter the source or delivery method, customers expect more than a reliable power supply — they expect it to be always on. They want to save money, and possibly make money by selling power back to the grid. They want the ability to manage their energy consumption at their fingertips. At the same time, they want immunity from cyber threats. It's complicated, and that's why Black & Veatch — a global leader in crafting constructive, data-driven strategies for sustainable power investments — is the right choice.

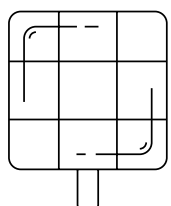


### **Sustainability is ingrained into everything we do**

We're making those investments less daunting with environmental and social responsibility leading the way. When it comes to air quality, we're setting you up for success with decarbonization efforts including DERs and carbon capture. We're also testing technologies that have the potential to replace or augment fossil-fuel generation in power plants. Sustainability doesn't stop there. We strive to minimize the quantities of materials required for our designs. One less truckload of soil to move, one less foot of pipe to weld, and one less electrical circuit to pull reduces overall environmental impacts. Plus, our work with you creates jobs that boost local economies and prepares people — around the world and from diverse backgrounds — for long-term career success.

#### **Ask Us About**

- EPC and O&M
- Remaining Asset Life Assessments
- Staff Augmentation
- Disaster Response Services



**17** Gwac  
**of solar EPC  
projects since  
2016**

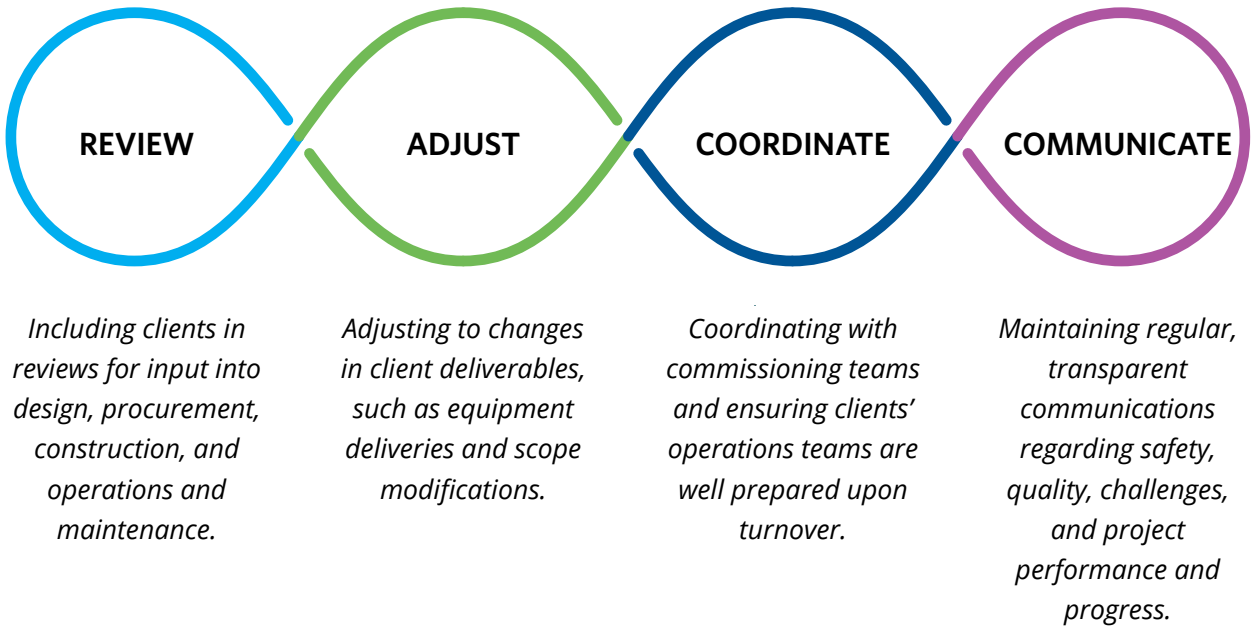




# The Components of Our Integrated Approach

No guesswork for you, no surprises from us

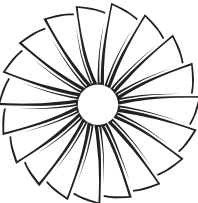
As an integrated global power generation, transmission and distribution infrastructure leader, we're your trusted partner for innovative, new and operating asset services and full engineering, procurement and construction (EPC) solutions. Regardless of the scope or size of the project, our execution is centered on safety and characterized by cost and schedule certainty. We offer in-house project execution through union and open-shop construction entities. Our flexible, cohesive teams provide seamless project delivery solutions across the entire project life cycle.



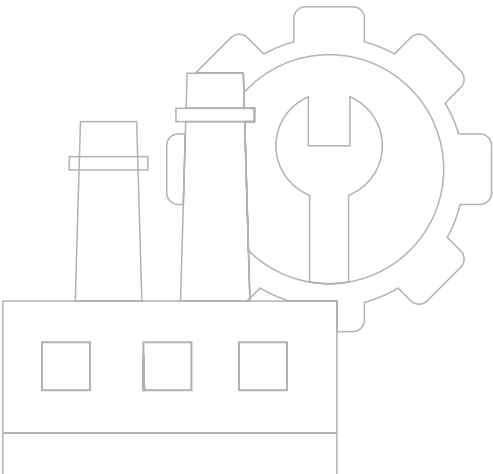


### Conventional Generation

We provide complete new and operating asset services, from concept through construction and operations, for all types of conventional power generation assets. Regardless of fuel choice, we help clients plan, build and operate new plants and evaluate options to repower, retrofit or retire existing facilities. We also help clients meet current and future environmental regulations. We offer standalone, full-service, in-house environmental consulting. By integrating our environmental and engineering capabilities, clients can ease the process of developing optimally designed and permitted, environmentally sound projects.



No matter how or where sources of power generation evolve, we will be there with reliable, affordable baseload and flexible power solutions that help our clients honor their commitments to the communities they serve.



### Ask Us About

- Clean Energy Solutions
  - Hydrogen
  - Nuclear
- Gas-to-Power
- Plant Modernization
- Decarbonization

**344**  
gigawatts of  
**power deployed for  
new and operating  
assets**

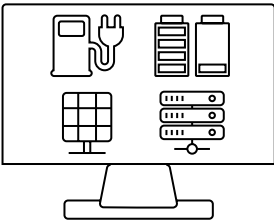




## Distributed Energy

To build the grid of the future, our distributed energy expertise allows clients to make efficient use of their existing facilities, integrate growing amounts of renewable resources onto the grid, or design and construct assets from rooftop solar to microgrids or other systems that increase sustainability, reliability and resilience. Our expertise in traditional power

distribution, emerging operational technologies, non-wires alternatives, and the automation and orchestration required at the grid's edge allows us



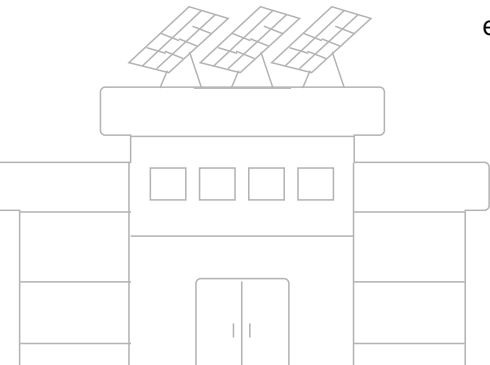
**20,089**  
**MWh of**  
energy storage  
experience

to operationalize distributed energy resources (DERs) in a cost-effective manner for utility, commercial and industrial clients.

Our global leadership in distributed energy helps our clients reach sustainable energy goals that strengthen their bottom line.

### Ask Us About

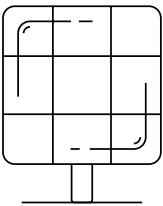
- Primary Power Systems Services
- Reliability and Resiliency Services
- Commercial DER (microgrids, distributed solar + BESS)
- Non-Wires Alternatives
- Electrical Vehicle (EV) Infrastructure
- Behind-the-Meter Storage
- Monitoring & Maintenance
- Grid Modernization / Power Distribution
- Asset Management Services





## Renewable Energy

We provide reliable and competitive solutions for solar, wind, energy storage and other alternative energy assets that enable our clients to expand their energy portfolios and enhance the performance of operating facilities. We deliver utility-scale solar, wind and battery solutions that are competitive, flexible and forward-looking. Our industry-leading regulatory, technology and execution expertise enable us to help develop, install, and connect renewable energy to the grid, also influencing the performance of operating assets.



**69+**  
gigawatts of  
solar project  
experience

Meet your financial, sustainability and reliability commitments with firm and dispatchable renewable generation delivered by your trusted partner — Black & Veatch.

### Ask Us About

- Solar (Photovoltaic and Floating)
- Wind (Balance of Power, Repowering, Offshore)
- Battery Energy Storage Systems



**56+**  
gigawatts of total  
wind project  
experience

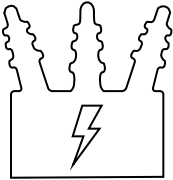






## Transmission

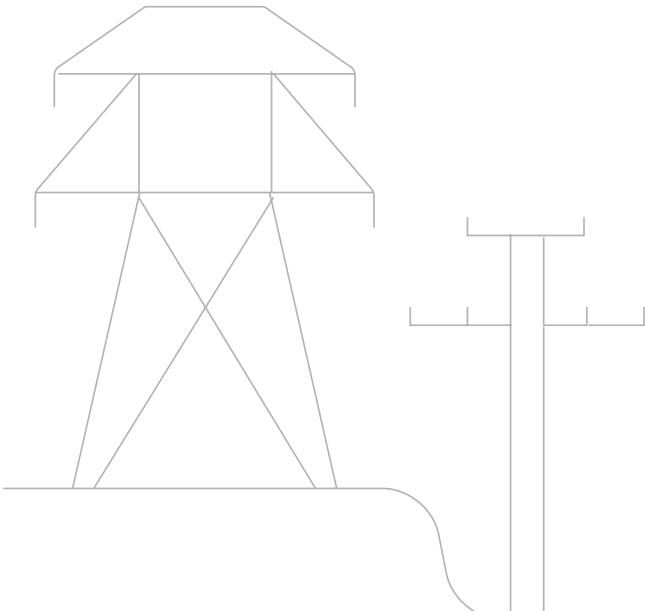
Today's transmission systems are growing in complexity. Extreme weather events, renewables integration and other forces are driving the need for more overhead and underground transmission lines, as well as grid modernization. We work in close collaboration with our clients to deliver critical substation and interconnection assets for projects of all sizes and voltages. We also provide expertise in transmission line routing and substation siting, and we address all types of environmental and permitting requirements.



### Ask Us About

- Overhead and Underground Transmission Lines
- Substations
- Renewables Integration
- Emerging Technologies
- HVDC/FACTS
- Program Management

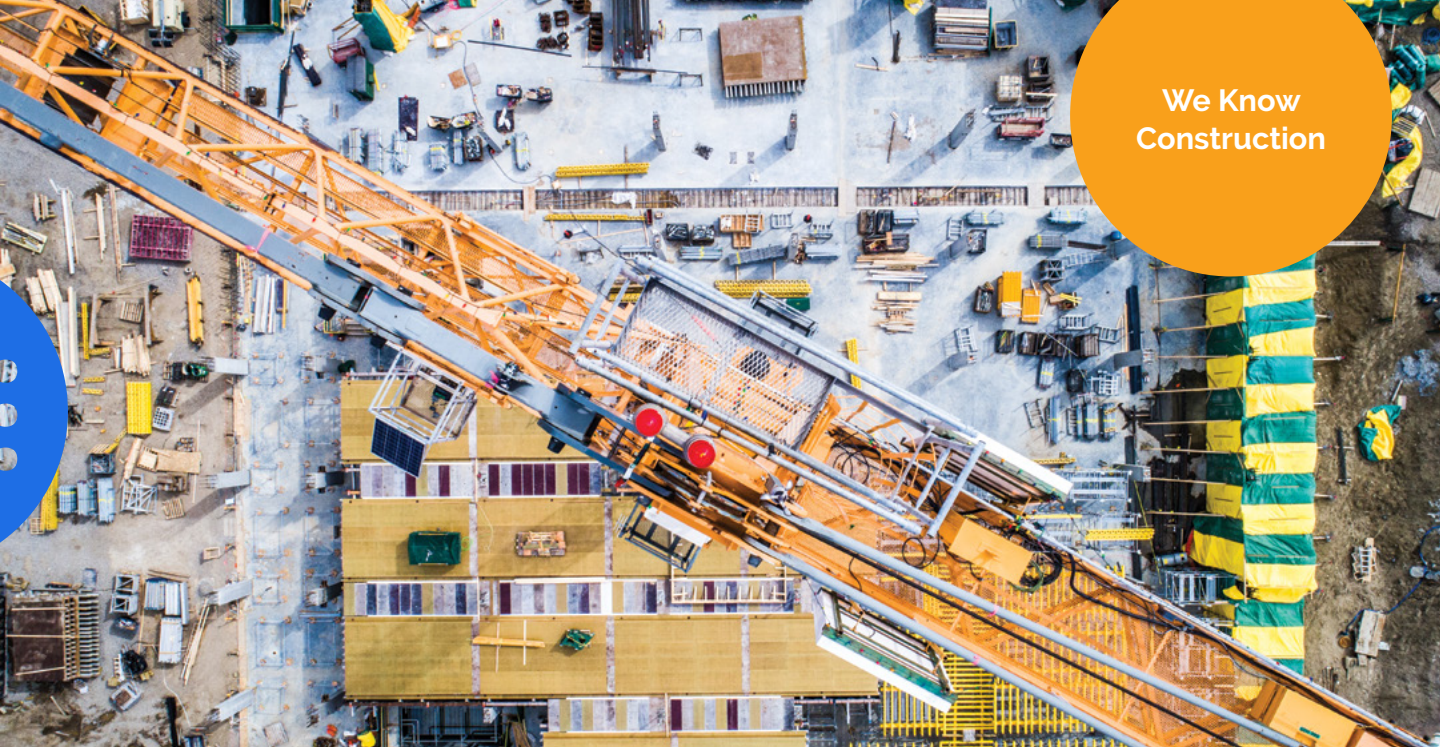
Our proprietary analytics tools, processes, and end-to-end power transmission solutions mean your projects will safely achieve reliability, compliance, and profitability today, and for years to come.



**1st** to design a  
**500 kV**

underground transmission line with joints in North America.





We Know  
Construction

Our construction team members are engaged in engineering reviews from day one and provide invaluable input to ensure that the resulting designs are efficient and safe to construct. Additionally, many of our engineers have construction site experience and bring best practices to improve the safety of construction back to the design office. Planning for safety early in the process reduces overall hazards during construction and in long-term operations and maintenance.

### A construction leader in global power infrastructure and technology

Advanced-class combined cycle. Solar photovoltaic and battery energy storage systems. Wind turbines. Emerging fuels technologies. Substations. Microgrids. Overhead and submarine high-voltage direct current lines. You name it, and Black & Veatch gets it done with full construction services through these entities:



BLACK & VEATCH CONSTRUCTION, INC.

#### Black & Veatch Construction, Inc. (BVC)

- Union construction
- Projects self-performed on direct-hire or subcontract basis
- Signatory to all trades under the National Maintenance Agreements Policy Committee, General Presidents' Project Maintenance Agreement, and selected local agreements
- American Society of Mechanical Engineers certificate holders of S, A, PP, and U as well as National Board Inspection Code (NBIC) R-certified

Learn more at [bvci.com](https://bvci.com)



A BLACK & VEATCH COMPANY

#### Overland Contracting Inc. (OCI)

- Open/Merit shop construction
- Projects self-performed on direct-hire or subcontract basis
- American Society of Mechanical Engineers certificate holders of S, A, PP, and U as well as NBIC R-certified

Learn more at [OverlandContracting.com](https://OverlandContracting.com)



#### BVI

- Top-line self-perform or top-line consortium partner for global projects
- Worldwide construction management services

# About Black & Veatch

Black & Veatch is an employee-owned engineering, procurement, consulting and construction company with a more than 100-year legacy of innovation in sustainable infrastructure. Our global professionals are committed to solving humanity's critical infrastructure challenges, while also considering the impact on the people, places, and resources where we live and work.

- Our global offices are strategically located to provide clients with localized solutions.
- We have completed projects in more than 100 countries on six continents.
- Our portfolio spans power, telecommunications and water — all necessary to support commercial and industrial operations, data centers, mining, government and utilities.



Our core value of safety ensures clients, their employees, and Black & Veatch professionals return home safely from work, each day; they are unharmed and ready for tomorrow. Planning for safety early in the process heightens hazard awareness and gives us the opportunity to develop mitigation strategies.

## Strategically Located Black & Veatch Power Offices

