



VIRTUAL JETC

JOINT ENGINEER

TRAINING CONFERENCE



WWW.SAMEJETC.ORG

#SAMEJETC20

Design and Construction for Successful Accreditation of a Secure Facility

Moderator: Heidi Perham, Black & Veatch

Speakers:

- David Bek, Director of Facilities and Logistics, National Air and Space Intelligence Center
- Doug Anderson, VP of National Security Services, Black & Veatch
- Josh Hoyord, Federal Market Sector Leader, LEO A DALY
- Chris Ackert, Director of Operations, Dawson



CODE of CONDUCT

SAME is committed to providing a safe and welcoming experience for all participants. As such, all communications through this webinar platform should remain professional, positive, friendly, and welcoming to others at all times. This virtual environment is a place for diversity of thought, organization, and individuals; as such, respect and inclusivity for all is expected. Unacceptable behavior includes, but is not limited to intimidating, harassing, abusive, discriminatory, derogatory, or demeaning conduct; disruptive, incessant and unwelcomed instant messaging; or other unprofessional behavior be it written, verbal, or otherwise as determined by SAME and its representatives, in their sole discretion. Anyone engaged in unacceptable behavior is subject to expulsion from the event, at SAME's sole discretion, without refund. Unacceptable behavior will not be tolerated and should be reported to registration@same.org.

HOUSEKEEPING NOTES & TIPS

- Audio is broadcast through your computer speakers; when you entered you should have seen a play button...make sure you click “PLAY!”
- During the presentation, all participants will be in a listen-only mode
- Submit a technical issue via the “Chat” function on your control panel and someone will respond
- You may send a private note to other attendees under the Chat tab / private. Please do not abuse this privilege!
- Submit a written question for the speaker at any time via the “Q&A” tab
 - Also review questions that have been submitted already by others – click “Upvote” to note that you’re also interested in hearing the answer to this question
- Presentations (if any) are housed in the “Handout” tab
- When a speaker shares their webcam, you can MOVE the placement of the webcam on your screen. Just click on the corner of the webcam inset and you’ll be able to move it!
- This session will be recorded for future viewing and placed in the Attendee Service Center so you can revisit it.

CREDITS & PRESENTATIONS

- Earn 1 PDH for Attending this Session.
- You retrieve your transcript/certificate in the Attendee Service Center in about a week.
- Those seeking AIA Learning Units, please download and complete the AIA credit form from the VJETC website and send it to sessions@same.org. SAME will submit this to AIA on your behalf.
- Presentations can be downloaded now via the “handout” tab
- Presentations can also be downloaded from the SESSIONS page of the VJETC site
- Recordings will be available in about a week from the Attendee Service Center

www.samejetc.org



THANK YOU SPONSORS

This track was sponsored by



Design and Construction for Successful Accreditation of a Secure Facility

- Customer Perspective
- Planning
- Design
- Construction/O&M

POLL QUESTION #1

Are you a;

- a) Government staff member responsible for programming/maintaining facilities
- b) Contracting Professional
- c) Accrediting Professional
- d) Designer
- e) Constructor



SPEAKER



David Bek, Director of Facilities and Logistics
National Air and Space Intelligence Center

SPEAKER



Doug Anderson, VP of National
Security Services, Black & Veatch

SPEAKER



Josh Hoyord, Federal Market Sector
Leader, LEO A DALY

SPEAKER



Chris Ackert, Director of Operations,
Dawson

CUSTOMER PERSPECTIVE

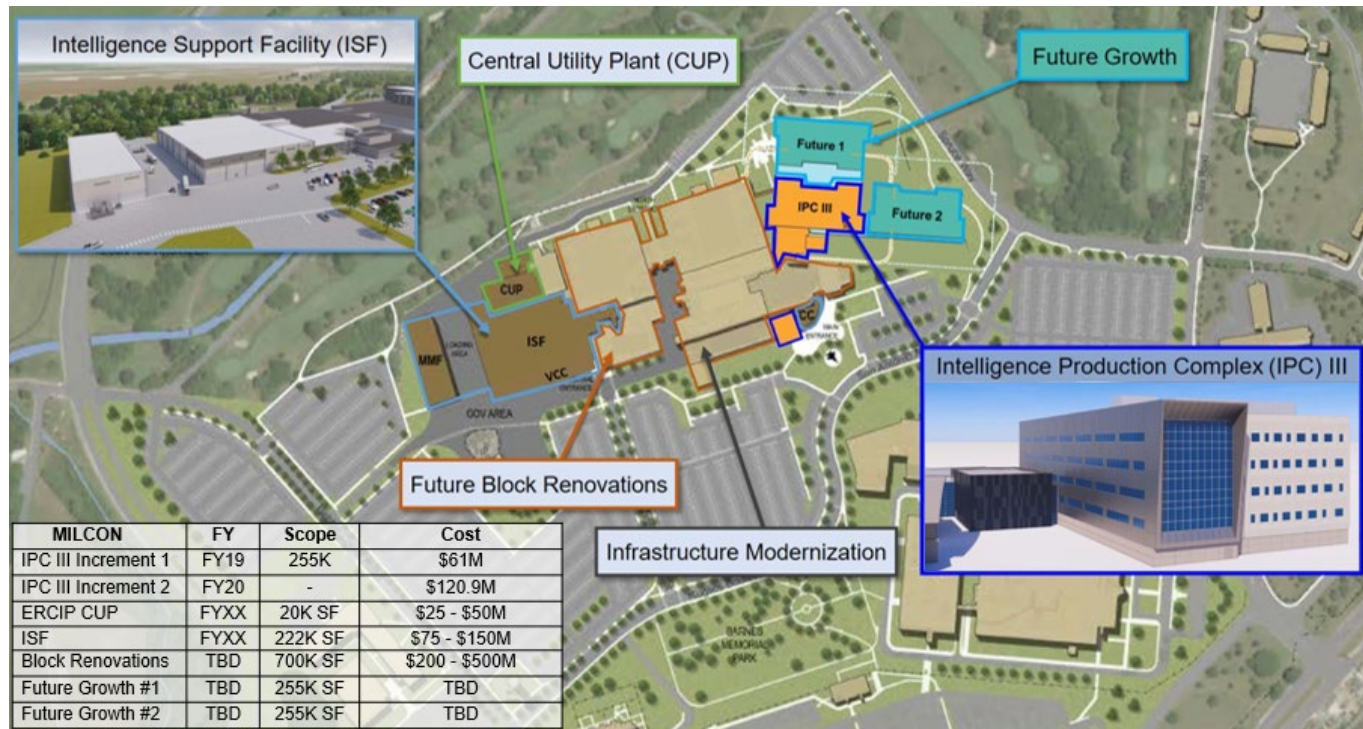


- Project Preview
- Planning and Design Lessons Learned

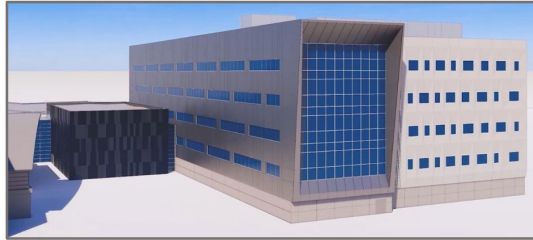
Intelligence Community Directive (ICD) – 705 Sensitive Compartmented Information Facilities

Upfront planning is critical to project success ... especially in a ICD 705 environment

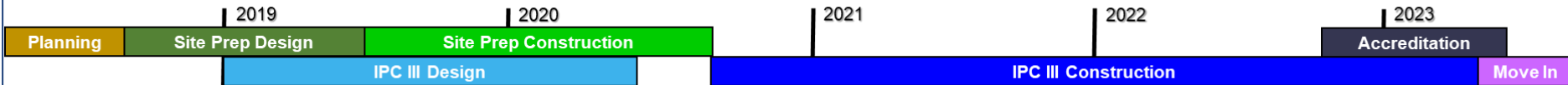
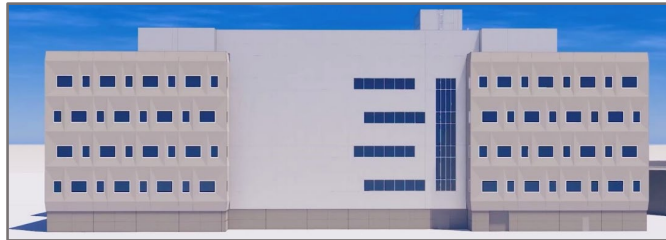
Project Preview



Intelligence Production Complex (MILCON) IPC III

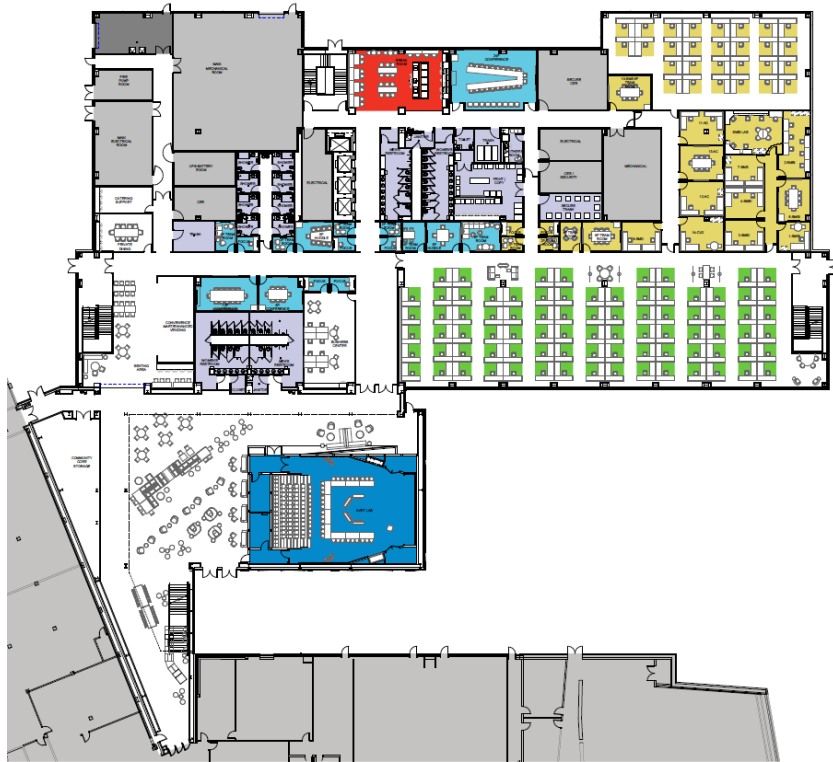


- \$182M Authorized & Appropriated (FY19 & 20)
- 255KSF modern analytical addition
- 980 production seats
- Technical intelligence laboratories
- Special program work spaces
- Training & collaboration spaces
- Improved site security & infrastructure reliability
- Corrects 10 site-wide fire safety deficiencies



IPC III MILCON

1st Floor



2nd – 5th Floors



Customer Planning and Design Lessons Learned

- Master Facilities & Area Development Plans
- Customer Concept Document
- Accreditation 'pre-approval'
- Project delivery team (PDT)
- Strategic & tactical communications
- Acquisition strategy
- Change management
- Benchmarking
- Large project – phased vs incremental



Back Up Slide – Customer Perspective

MISSION

Discover and characterize air, space, missiles, and cyber threats to enable full-spectrum, multi-domain operations, drive weapon system acquisition, and inform national defense policy



POLL QUESTION #2

How familiar are you with the ICD 705 Criteria?

- a) Expert user – refer to it frequently.
- b) I read it once
- c) I've heard of it
- d) ICD what?



PLANNING

Mission strategies/ICD 705

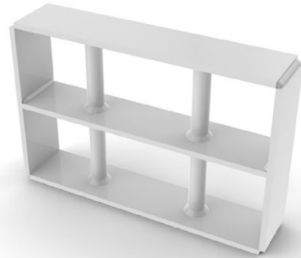
- Building Envelope
- Mixed use



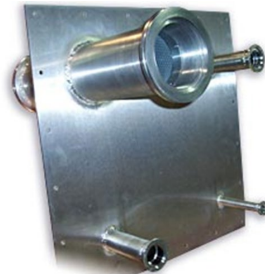
PLANNING

Considerations

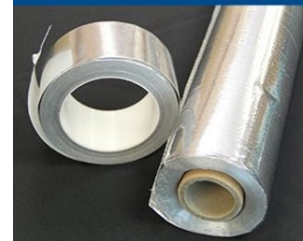
- RF Strategies
- Acoustical Strategies
- Costs of interior construction
- Window shielding vs Daylighting
- Space to facilitate MAC and reconfiguration



Specialty Glass



rFoil®



DESIGN

RF Strategies

- Clear definition of the secure perimeter (path, wall construction, and acoustic properties)
- Description of the entry/exit sequence into and out of the space (including access control devices)
- Identification of systems entry points (ductwork, conduit)
- Location of red (secure) and black (non-secure) data networks demonstrating that required separations have been provided
- Raised Access Floor Considerations

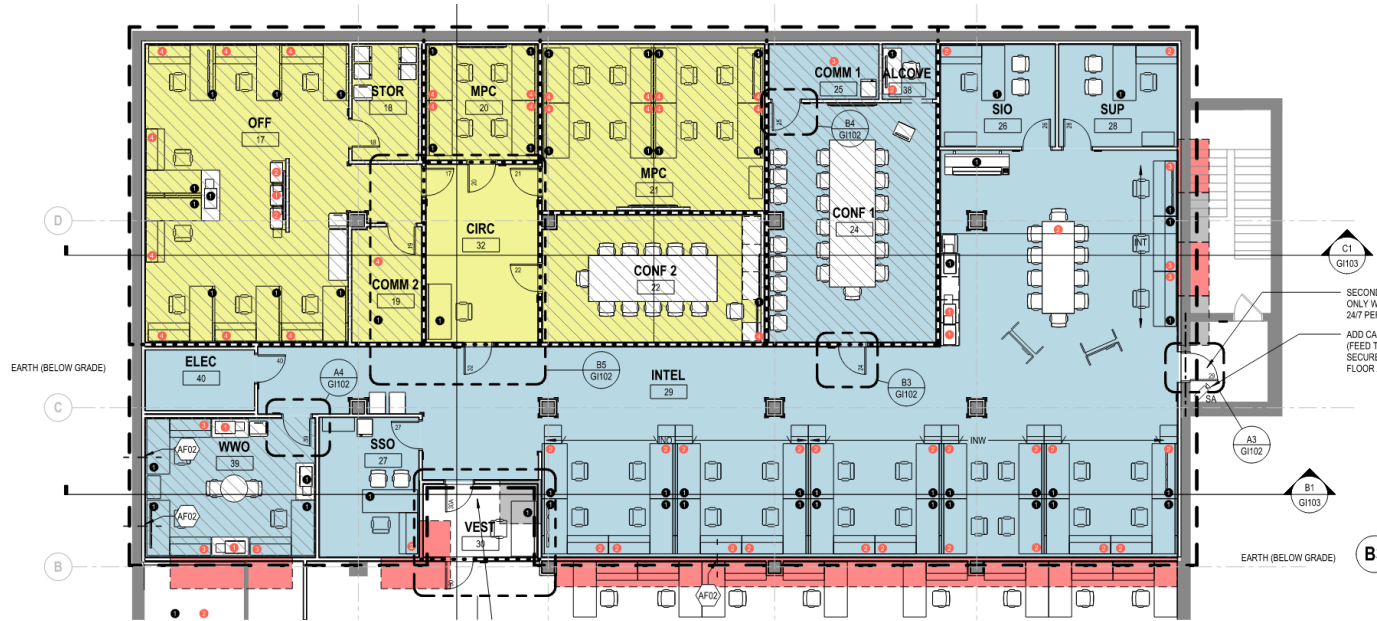
Modeling

- 3D views as necessary to convey the strategy for providing a six-sided perimeter boundary (four walls, ceiling, floor)

Mock-ups & Testing Requirements

- STC + RF Shielding

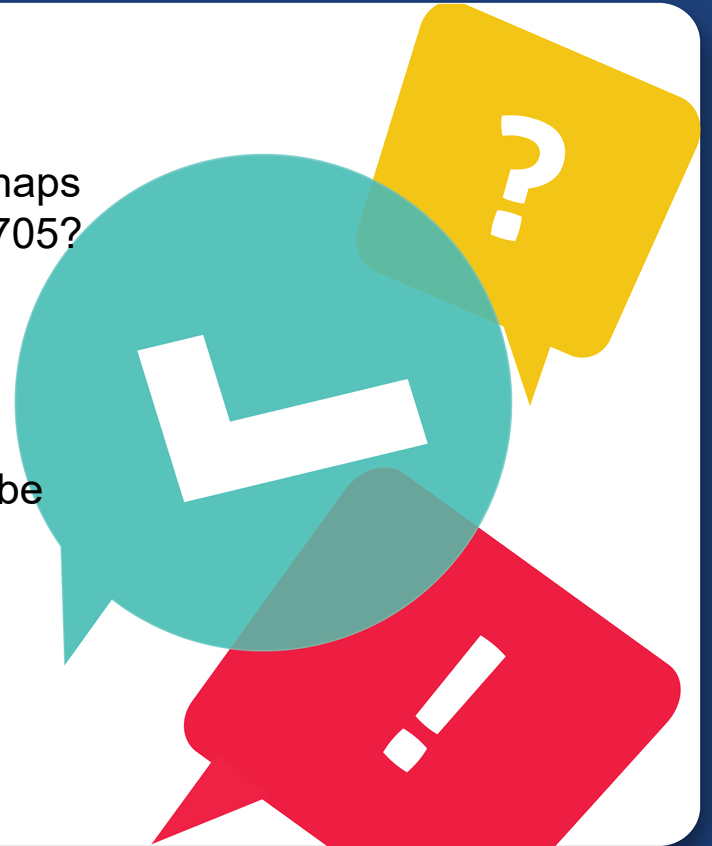
ICD 705 Compliance Plan



POLL QUESTION #3

How interested would you be in an opportunity/perhaps a SAME training session in the finer points of ICD 705?

- a) I could use a deep dive technical session on complying with ICD 705 on facility design
- b) Not interested in technical content but it would be good for me to know more.
- c) I would be happy to teach that session!



CONSTRUCTION

SCIF Construction GOAL: Accreditation

KNOW WHAT THE CONTRACT SAYS

- This is your controlling document
- Contract documents override all other documents
- SCIF Requirements need to be explicitly defined in the contract

Understand the Technical Specifications for Construction and Management of SCIFs v1.4

- *“IC Tech Spec sets forth the physical and technical security specifications and best practices for meeting standards of ICS 705-1. When the technical specification herein are applied to new construction and renovation of SCIFs, they shall satisfy the standards outlined in 705-1...” (IC Tech Spec Chapter 1.A.)*
- This is a specification document that should be the basis of all contract plans and specifications or could be concurrently referenced in contract specifications – Similar to Unified Facilities Guide Specifications

Key Questions Before Award

Who is the AO and what will be their involvement throughout the contract execution?

- Potential Time impacts if not involved
- Review of security related submittals
- Changes to design items related to SCIF boundary

Is there an approved Construction Security Plan (CSP)?

- CSP, if required, should be developed prior to award
- NOT CONTRACTOR'S RESPONSIBILITY TO DEVELOP
 - “Site Security Manager Develops the CSP and AO Approves” (IC Tech Spec Chapter 3.B.1)
- CSP can drastically affect Contractor / Subcontractor cost / time / personnel
 - “Construction and design of SCIFs should be performed by US companies using US citizens to reduce risk, but may be performed by U.S. companies using U.S. persons (an individual who has been lawfully admitted for permanent residence as defined in 8 USC § 1101(a)(20) or who is a protected individual as defined by Title 8 U.S.C. § 1324b(a)(3)). The AO shall ensure mitigations are implemented when using non-U.S. citizens. **These mitigations shall be documented in the CSP.**” (IC Tech Spec Chapter 3.B.5)
 - Document Control
 - Segregated construction areas
 - Security Inspections
 - Site Control Measures (i.e. ID verification, Random searches, signage, physical barriers to deny access, vehicle inspections)

Key Questions

What documentation is required?

- Lack of construction documentation can significantly impact the Accreditation process
 - Photos logs of wall systems, man bars, sealed penetrations, security protocols
 - Material control logs
 - Construction access control logs
 - Location and verification of duct access ports
 - As-built drawings
 - Approval of field changes by AO

What verification testing will need to be done?

- Acoustic
- Visual verification throughout – time impact (Schedule)
- RF Testing

Proactive management of Communication – Don't assume everyone is on the same page!

O&M of SCIF Facilities

O&M needs to part of the planning process

- Service and Maintenance Schedules must be followed
- Inspection of components
 - Routine items that are typically allowed to fail
 - Doors – locks, seals, thresholds
 - HVAC Seals, penetrations
 - Security Inspection vs. Inspections of Security Features of work
- Integration of Building Facility Technology
 - Deployment and management strategies



Q&A AND FEEDBACK

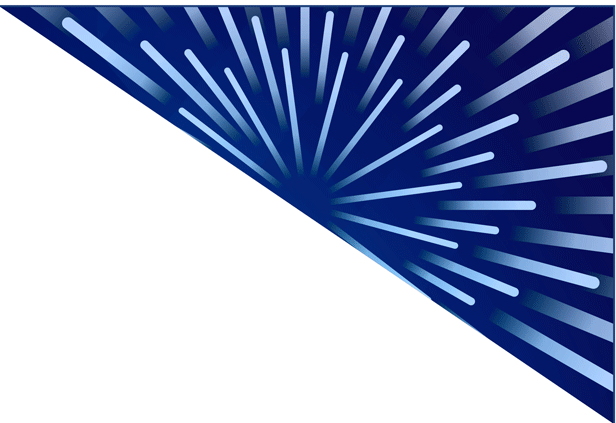
David Bek NASIC david.bek.1@us.af.mil

Doug Anderson Black & Veatch Andersond2@BV.com

Josh Hoyord Leo A Daly jjhoyord@leoadaly.com

Chris Ackert Dawson cackert@dawson8a.com





This track was sponsored by



THANK YOU TO OUR VIRTUAL JETC SPONSORS!

Titanium

AECOM



Platinum



Gold

Conti Federal



Silver

Atkins
Cabrera Services
Cover Six Shelters

Dewberry
EYP
IMEG

KOMAN Holdings LLC
Parsons
Pond & Company

RS&H
Siemens
Wood

WWW.SAMEJETC.ORG #SAMEJETC20



THANK YOU SPONSOR

The next bank of sessions begins in one hour, at 2:30 p.m. EDT

Until then....join us for a quick energizing activity led by a certified yoga instructor. It'll get your brain and blood pumping for the rest of the day!

Energy Activity Sponsored by:

